

SKETCH-D.dwg

PROJECT MGR.  
Cliff Reppinger, A.I.C.P.

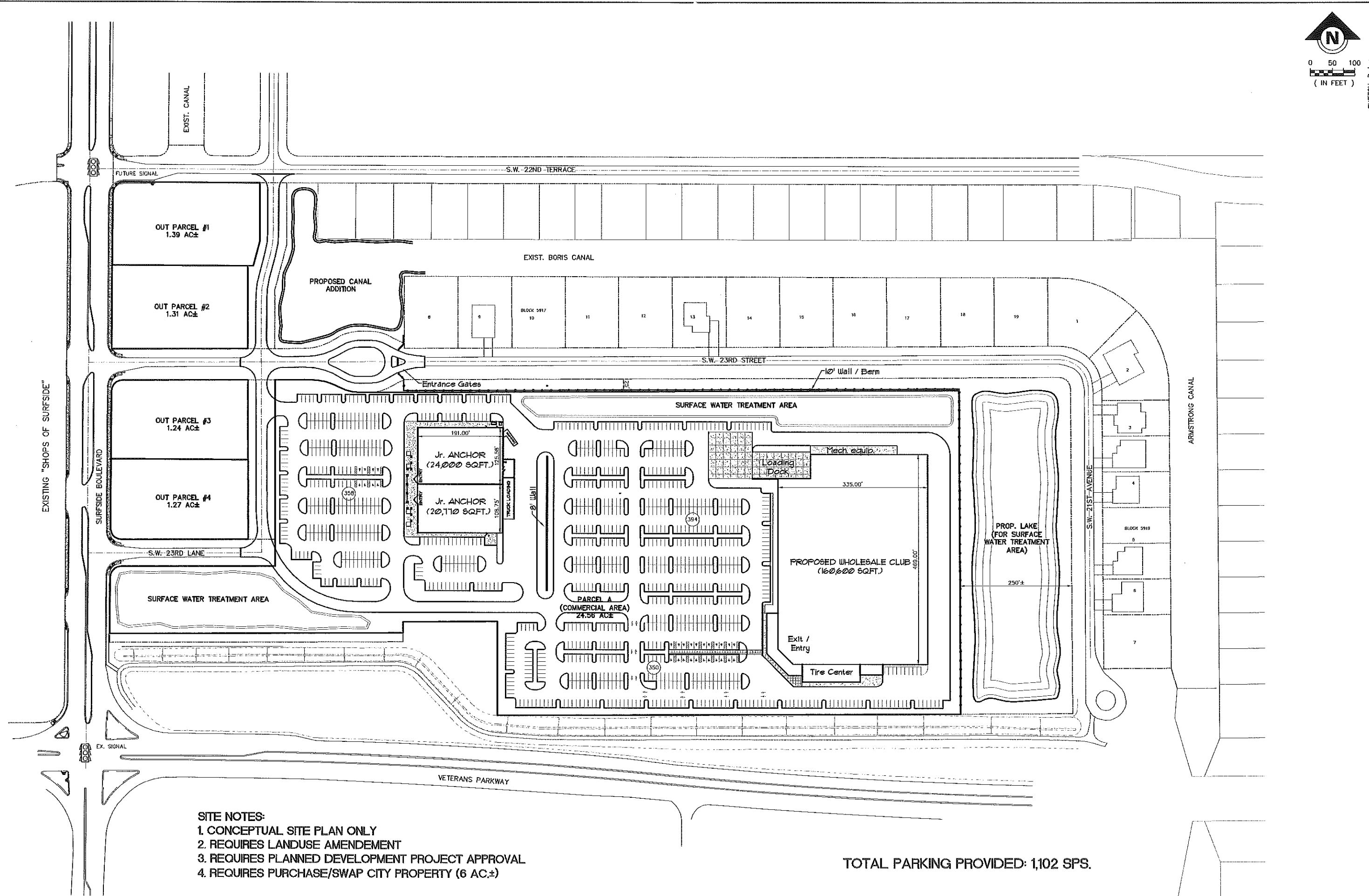
DATE	BY	REVISION DESCRIPTION

**AVALON ENGINEERING, INC.**  
2503 DEL Prado BLVD. #200  
CORAL GABLES, FLORIDA 33134  
P: 305-442-2077  
F: 305-442-2077

DEVELOPER:  
DODGE CAPITAL

**PROPOSED PROJECT**  
(NEC) VETERANS PKWY & SURFSIDE BLVD.  
CAPE CORAL - LEE COUNTY, FLORIDA

**SKETCH PLAN 'D'**  
( 04/22/09 )



- SITE NOTES:**
1. CONCEPTUAL SITE PLAN ONLY
  2. REQUIRES LANDUSE AMENDEMENT
  3. REQUIRES PLANNED DEVELOPMENT PROJECT APPROVAL
  4. REQUIRES PURCHASE/SWAP CITY PROPERTY (6 AC±)

TOTAL PARKING PROVIDED: 1,102 SPS.